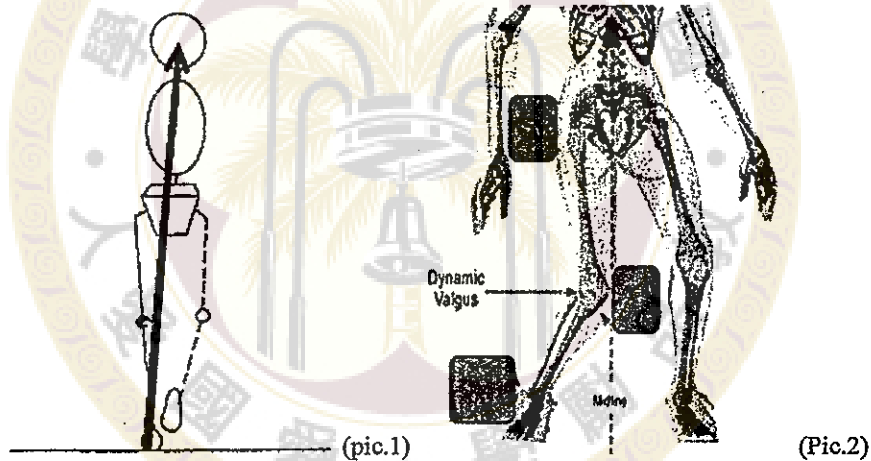
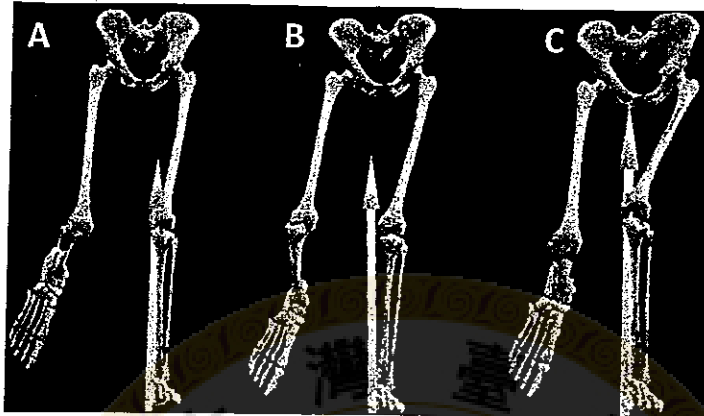


1. 肩關節內轉角度限制(Glenohumeral Internal Rotation Deficit, GIRD)常發生於那類族群?請敘述可能造成原因及相關病理機轉。(20%)
2. 當你好友的母親被告知罹患乳癌，將於下週開刀，身為物理治療師，請問您如何後續的協助?請分為手術後立即處理，積極治療(化療放療)期間之處理，療愈期間之建議，癌末期之協助四階段進行說明。(20%)
3. Picture 1 showed the ground reaction force (GRF) during stance phase of gait in the frontal plane and please explain what does GRF do to subject's ankle, knee, and hip joint (6 points) and what are the associated muscle activities (4 points) (10%)



4. A) The phenomenon we saw in picture 2 is called “dynamic valgus” or “medial collapse” of the knee, what are the motions happening at the hip, knee, and ankle joint and which muscle weakening would result in this motion? (4 points)
- B) Individuals showing medial collapse sign with patellofemoral pain usually perform unilateral squat like shown in picture 3 [going from full knee extension (A) → 30 deg knee flexion (B) → 60 deg knee flexion (C)]. Please explain the compensatory strategy they're using to avoid pain. (6 points) (10%)

見背面



(Pic. 3)

5. 有關脊椎疾患：A. 請說明何謂(1) spondylosis (2) spondylolisthesis (3) compression fracture? 可畫圖加以說明 (10%)，B. 請介紹針對以上三種脊椎問題的物理治療處置 (10%)
6. 試述骨科物理治療的理論基礎 (10%)，治療方法的發展過程 (6%)，及未來趨勢 (4%)。

試題隨卷繳回